



UL Verification Services Inc.
7036 Snowdrift Road
Allentown, PA 18106
610-774-1300



Indoor Distribution Test Report

Relevant Standards
IES LM-79-2008
ANSI C82.77-2002

Prepared For
Autronic Plastics Inc

Roy Jacob
1150 Motor Parkway
Central Islip
NY 11722
United States

Catalog Number
CL-24-VH1-C-UV

Order Number
11563064
Test Number
11563064.07

Test Date

2016-12-14

Prepared By

Daniel Booth, Technician

Approved By

Tiffany Hamm, Project Handler

The results contained in this report pertain only to the tested sample.
This report shall not be reproduced, except in full, without written approval of Underwriters Laboratories.
This report must not be used by the client to claim product certification, approval, or endorsement by
NVLAP, NIST, or any agency of the Federal Government.



Luminaire Description: Aluminum housing, frosted and glass lens enclosure
Lamp: 384 white LEDs
Mounting: Recessed
Ballast/Driver: Philips XI075C200V054BST1

Luminaire



Luminaire Characteristics

Luminous Length: 40.25 in.
Luminous Width: 17.50 in.

Summary of Results

Total Luminaire Output: 15370 Lumens
Luminaire Efficacy: 96.3 lm/w
Maximum Candela: 6109 Candela

Test Conditions

Test Temperature: 24.4 °C
Voltage: 119.9 VAC
Current: 1.334 A
Power: 159.6 W
Power Factor: 0.998
Frequency: 60 Hz
Current THD: 6.41 %

Laboratory results may not be representative of field performance
Ballast factors have not been applied



Distribution - Goniophotometer

Distribution Test Conditions

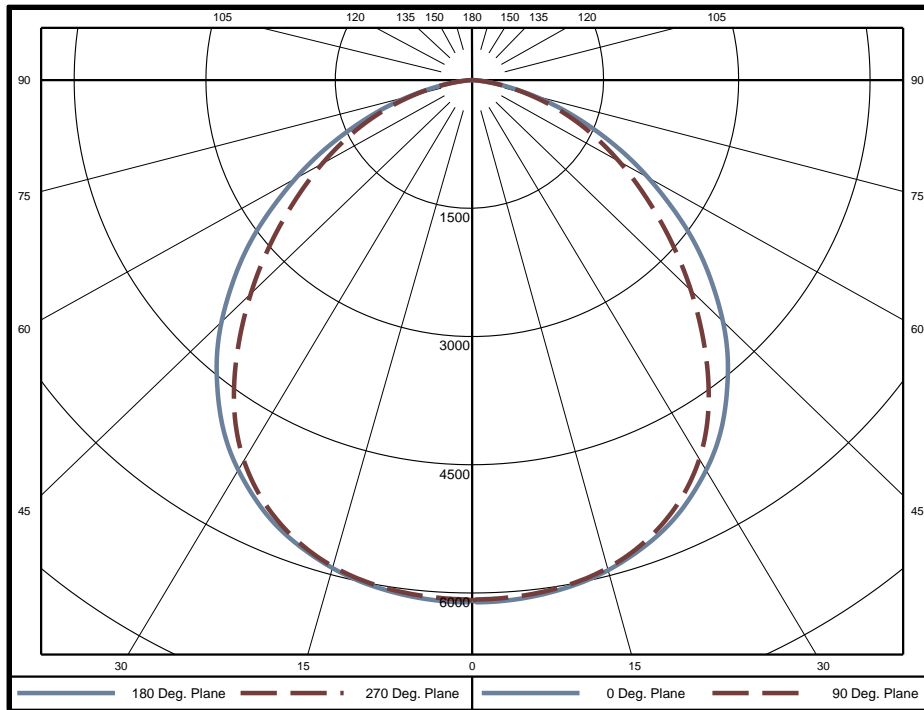
Temperature	Voltage	Current	Power	Power Factor	Frequency	Current THD
24.4 °C	119.9 VAC	1.334 A	159.6 W	0.998	60 Hz	6.41 %

Summary of Results

Spacing Criteria
 0-180: 1.28
 90-270: 1.28

Total Lumen Output: 15370 Lumens
Luminaire Efficacy: 96.3 lm/w
Maximum Candela: 6109 Candela

Polar Plot



Zonal Lumen Summary

Zone	Lumens	% of Luminaire	Zone	Lumens	% of Luminaire	Zone	Lumens	% of Luminaire
0-5	145	0.9%	60-65	884	5.8%	120-125	0	0.0%
5-10	432	2.8%	65-70	680	4.4%	125-130	0	0.0%
10-15	708	4.6%	70-75	469	3.1%	130-135	0	0.0%
15-20	961	6.3%	75-80	270	1.8%	135-140	0	0.0%
20-25	1181	7.7%	80-85	109	0.7%	140-145	0	0.0%
25-30	1354	8.8%	85-90	18	0.1%	145-150	0	0.0%
30-35	1467	9.5%	90-95	0	0.0%	150-155	0	0.0%
35-40	1506	9.8%	95-100	0	0.0%	155-160	0	0.0%
40-45	1474	9.6%	100-105	0	0.0%	160-165	0	0.0%
45-50	1384	9.0%	105-110	0	0.0%	165-170	0	0.0%
50-55	1246	8.1%	110-115	0	0.0%	170-175	0	0.0%
55-60	1075	7.0%	115-120	0	0.0%	175-180	0	0.0%

Zone	Lumens	% of Luminaire
0-40	7754	50.4%
0-60	12933	84.1%
0-90	15363	100.0%
90-180	0	0.0%



Candela Tabulation
Horizontal Angle (Degrees)

Vertical Angle (Degrees)	Horizontal Angle (Degrees)															
	0	22.5	45	67.5	90	112.5	135	157.5	180	202.5	225	247.5	270	292.5	315	337.5
0	6086	6086	6086	6086	6086	6086	6086	6086	6086	6086	6086	6086	6086	6086	6086	6086
5	6092	6080	6062	6057	6060	6057	6062	6080	6092	6080	6062	6057	6060	6057	6062	6080
10	6034	6024	6009	6007	6010	6007	6009	6024	6034	6024	6009	6007	6010	6007	6009	6024
15	5933	5921	5906	5904	5909	5904	5906	5921	5933	5921	5906	5904	5909	5904	5906	5921
20	5776	5760	5737	5733	5736	5733	5737	5760	5776	5760	5737	5733	5736	5733	5737	5760
25	5561	5536	5498	5481	5482	5481	5498	5536	5561	5536	5498	5481	5482	5481	5498	5536
30	5271	5235	5173	5137	5131	5137	5173	5235	5271	5235	5173	5137	5131	5137	5173	5235
35	4917	4856	4748	4679	4659	4679	4748	4856	4917	4856	4748	4679	4659	4679	4748	4856
40	4483	4395	4232	4122	4090	4122	4232	4395	4483	4395	4232	4122	4090	4122	4232	4395
45	3998	3876	3668	3541	3506	3541	3668	3876	3998	3876	3668	3541	3506	3541	3668	3876
50	3459	3319	3097	2973	2937	2973	3097	3319	3459	3319	3097	2973	2937	2973	3097	3319
55	2885	2752	2546	2434	2408	2434	2546	2752	2885	2752	2546	2434	2408	2434	2546	2752
60	2299	2191	2019	1944	1934	1944	2019	2191	2299	2191	2019	1944	1934	1944	2019	2191
65	1738	1657	1538	1500	1495	1500	1538	1657	1738	1657	1538	1500	1495	1500	1538	1657
70	1209	1152	1093	1075	1077	1075	1093	1152	1209	1152	1093	1075	1077	1075	1093	1152
75	731	700	682	675	680	675	682	700	731	700	682	675	680	675	682	700
80	342	333	332	332	337	332	332	333	342	333	332	332	337	332	332	333
85	83	87	90	92	96	92	90	87	83	87	90	92	96	92	90	87
90	0	0	0	0	0	0	0	0	0	0	0	0	0	0	0	0
95	0	0	0	0	0	0	0	0	0	0	0	0	0	0	0	0
100	0	0	0	0	0	0	0	0	0	0	0	0	0	0	0	0
105	0	0	0	0	0	0	0	0	0	0	0	0	0	0	0	0
110	0	0	0	0	0	0	0	0	0	0	0	0	0	0	0	0
115	0	0	0	0	0	0	0	0	0	0	0	0	0	0	0	0
120	0	0	0	0	0	0	0	0	0	0	0	0	0	0	0	0
125	0	0	0	0	0	0	0	0	0	0	0	0	0	0	0	0
130	0	0	0	0	0	0	0	0	0	0	0	0	0	0	0	0
135	0	0	0	0	0	0	0	0	0	0	0	0	0	0	0	0
140	0	0	0	0	0	0	0	0	0	0	0	0	0	0	0	0
145	0	0	0	0	0	0	0	0	0	0	0	0	0	0	0	0
150	0	0	0	0	0	0	0	0	0	0	0	0	0	0	0	0
155	0	0	0	0	0	0	0	0	0	0	0	0	0	0	0	0
160	0	0	0	0	0	0	0	0	0	0	0	0	0	0	0	0
165	0	0	0	0	0	0	0	0	0	0	0	0	0	0	0	0
170	0	0	0	0	0	0	0	0	0	0	0	0	0	0	0	0
175	0	0	0	0	0	0	0	0	0	0	0	0	0	0	0	0
180	0	0	0	0	0	0	0	0	0	0	0	0	0	0	0	0

Average Luminance (cd/m²)
Horizontal Angle (Degrees)

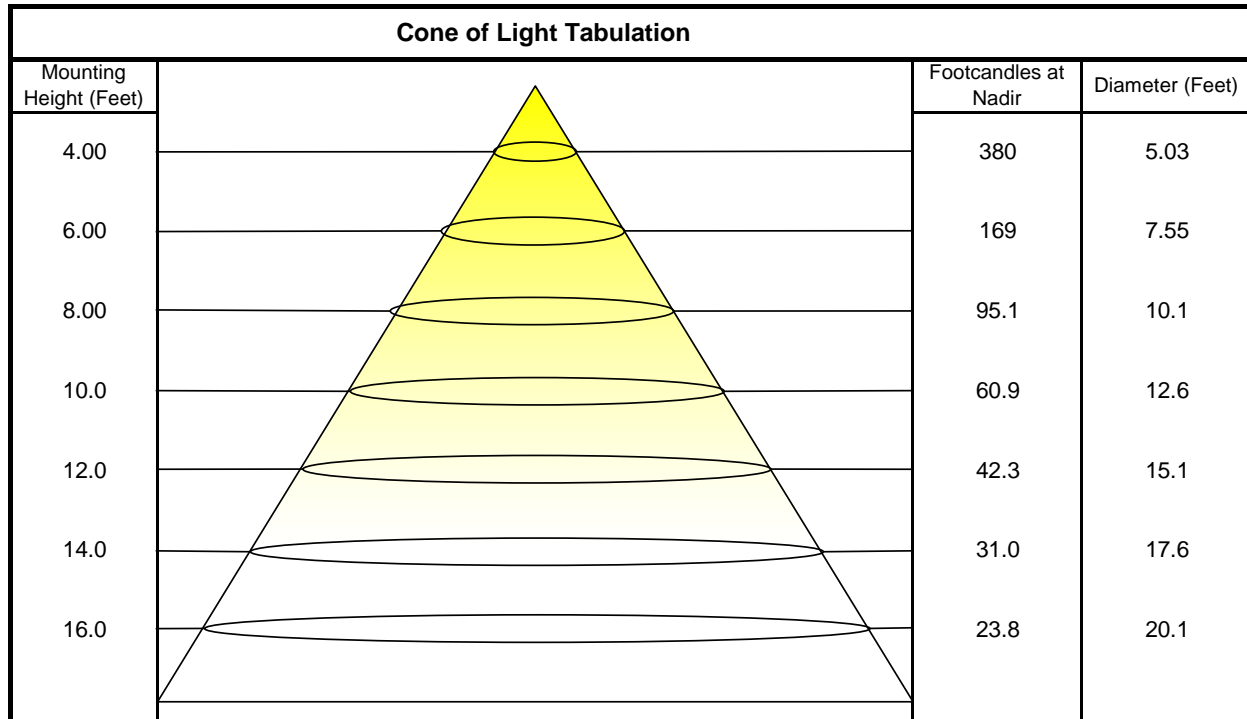
Vertical Angle (Degrees)	Horizontal Angle (Degrees)		
	0	45	90
0	13390	13390	13390
45	12440	11410	10910
55	11070	9768	9240
65	9048	8007	7783
75	6216	5799	5784
85	2087	2263	2417



Utilization of Lumens - Zonal Cavity Method

Effective Floor Cavity Reflectance 20%																		
Ceiling Cavity Reflectance	80				70				50			30			10			0
Wall Reflectance	70	50	30	10	70	50	30	10	50	30	10	50	30	10	50	30	10	0
Room Cavity Ratio (RCR)	** Values are expressed as Lumens delivered to the task surface **																	
0	18293	18293	18293	18293	17867	17867	17867	17867	17073	17073	17073	16347	16347	16347	15680	15680	15680	15366
1	16871	16204	15606	15067	16461	15858	15315	14823	15211	14765	14357	14616	14254	13919	14068	13779	13508	13196
2	15445	14268	13295	12476	15051	13982	13088	12329	13444	12693	12044	12949	12323	11773	12490	11974	11513	11194
3	14151	12627	11448	10509	13780	12388	11295	10415	11937	11002	10233	11521	10725	10057	11134	10462	9887	9565
4	13004	11254	9973	8994	12660	11053	9857	8932	10674	9634	8811	10322	9422	8693	9995	9220	8578	8258
5	11992	10102	8781	7806	11677	9932	8691	7763	9612	8518	7680	9313	8353	7599	9035	8194	7519	7204
6	11098	9128	7806	6857	10811	8984	7735	6827	8712	7598	6767	8457	7466	6709	8219	7340	6652	6346
7	10307	8299	6998	6086	10046	8177	6941	6064	7944	6831	6021	7725	6724	5978	7520	6622	5936	5640
8	9607	7590	6322	5451	9371	7485	6276	5435	7284	6186	5402	7096	6099	5370	6919	6014	5338	5053
9	8984	6979	5750	4921	8770	6888	5712	4908	6714	5638	4883	6551	5566	4858	6397	5496	4834	4560
10	8429	6448	5262	4473	8236	6369	5231	4463	6219	5168	4444	6076	5108	4425	5942	5050	4405	4143

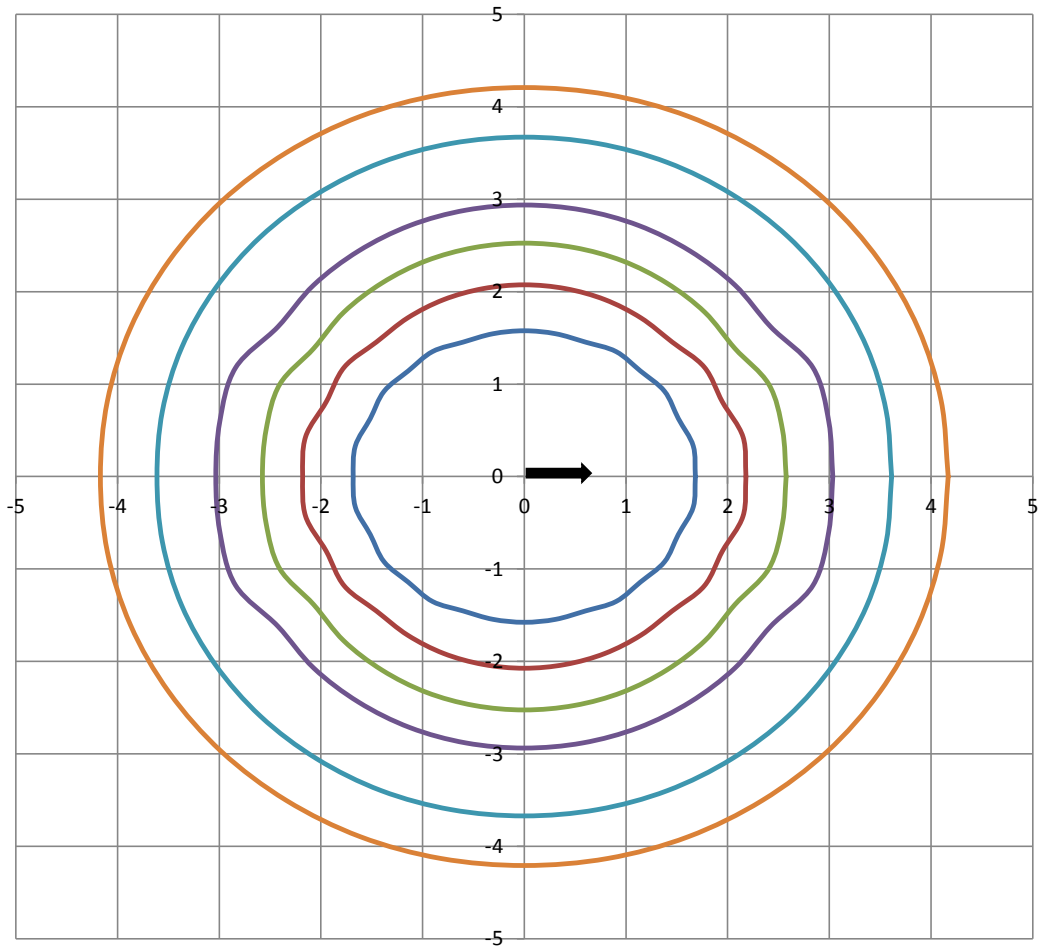
Beam and Field Information	
CIE Type:	Direct
Center Beam Intensity:	6086 Candela
Central Cone Intensity:	6080 Candela
Beam Flux:	10866.3 Lumens
Beam Angle (0-180):	107.4 Degrees
Beam Angle (90-270):	98.1 Degrees
Field Angle (0-180):	152.8 Degrees
Field Angle (90-270):	151.9 Degrees





ISOFootcandle Plot

Mounting Height - 8 Feet



Grid Lines in Units of Mounting Height

