

A Lighting Fixture Designed to Optimize LED Technology



The advent of LED technology has presented mass transportation authorities with “not-so-good, better, best” choices for upgrading subway tunnel lighting.

The “not-so good” choice removes the antiquated light source from an outdated lighting fixture and replaces it with an LED bulb. This “horseless carriage” approach, puts new technology into outdated and inadequate fixtures.

The “better” choice removes and replaces the light source and optics. This approach acknowledges that the light source must control lumen distribution in order to be effective and efficient.

The “best” choice is a new lighting fixture designed specifically for the LED light source. The new lighting fixture provides controlled lumen distribution and is designed to maximize lighting performance and minimize operational and maintenance costs.

Maximized Performance – Outstanding lighting levels with reduced energy and no maintenance

The Metro Track Light significantly surpasses NFPA 130 lighting level standards enabling track work and maintenance without auxiliary lighting in most applications. In addition, the Metro Track Light reduces operational costs, eliminates maintenance and is guaranteed for 5 years.

- Consumes <32 Watts
- ~5fc at 25’ spacing, greatly exceeding NFPA requirements
- Eliminates lamp replacement maintenance
- Quick-install mounting system is as fast as a “bulb change”
- Guaranteed 5-year life cycle

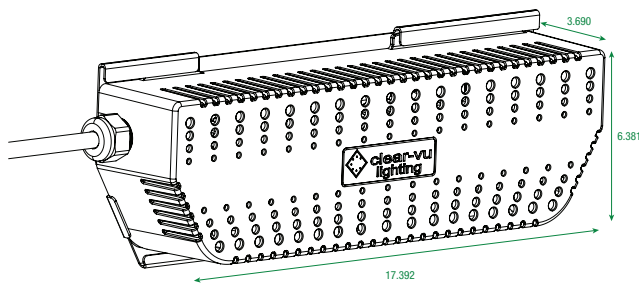


Universal quick-mount bracket minimizes installation costs and replacements

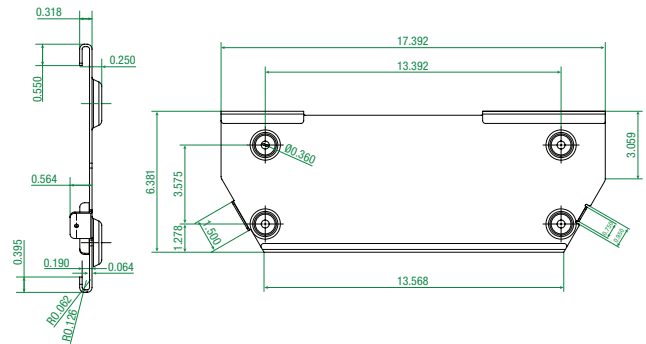


Zero lamp replacement maintenance with the Metro Track Light

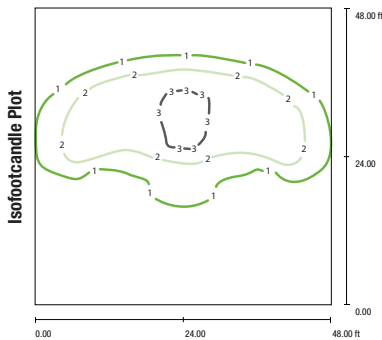
DIMENSIONAL DATA



MOUNTING BRACKET



PHOTOMETRICS



Value Chart

3.57	3.95	4.71	4.78	4.04	3.86	3.87	4.07	4.74	4.86	4.11	3.86	3.86	4.03	4.68	4.83	4.02	3.60
4.15	5.46	5.31	5.36	4.70	4.53	4.52	4.69	5.35	5.41	4.75	4.53	4.50	4.64	5.28	5.38	4.65	4.21
4.47	4.79	5.01	5.08	5.02	4.90	4.87	4.92	5.04	5.09	5.06	4.88	4.85	4.89	5.03	5.06	4.95	4.51
4.61	4.74	4.85	4.90	4.97	4.95	5.07	4.88	4.88	4.91	4.98	4.90	5.04	4.80	4.87	4.88	4.86	4.47
4.07	4.25	4.05	4.10	4.48	4.43	4.55	4.39	4.10	4.10	4.51	4.40	4.50	4.30	4.13	4.07	4.40	3.95

Mount Height	Spacing	Reflectance	Footcandles	Max	Min	Av	Max/Min
12 feet	25 feet	10%	Maintained (80%)	5.1	2.7	4.5	2.1:1

SPECIFICATIONS

Housing: IP67 rated components – light engine and power supply. Standard version of housing is injection molded polycarbonate; aluminium or stainless steel optional.

Optics: LED-based light engine with specialized optics designed to provide a uniform, lateral beam spread. 5,000K (3031 lumens/94LPW), CRI>70.

Electrical: Universal (95-295VAC), 480VAC or 600VDC power supply. 32-watt input power. Wiring whip standard (specify gauge and length). Double fuse optional.

Mounting: 10-gauge stainless steel quick-mount wall bracket.

Listings & Certifications: IP67 rated. Patent pending.

ORDERING INFORMATION

SERIES	HOUSING	COLOR TEMP.	VOLTAGE	OPTION
<input type="checkbox"/> MTL	- <input type="checkbox"/>	- <input type="checkbox"/>	- <input type="checkbox"/>	- <input type="checkbox"/>
MTL=Metro Track Light	PC=Polycarbonate AL=Aluminum SS=Stainless Steel	N=4,000K C=5,000K	UV=95-295 VAC 480=480 VAC 600=600 VDC	DF=Double Fuse

PROJECT INFORMATION

Project Name/Location _____

Fixture Type _____

Fixture Quantity _____

Catalog Number _____