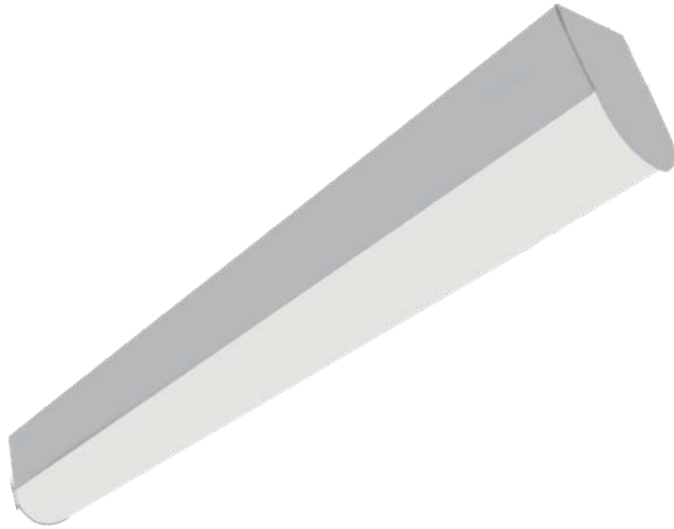




At only 2.25" wide, the NLSR fits discretely into many architectural applications. It is suitable for continuous runs and offers a clean, unbroken look.

NLSR narrow linear direct surface/suspended



Features and Specifications:

Construction:

- Custom extruded diffuser offers high light transmission with excellent LED diffusion
- Precision fabricated steel housings are an economic alternative to extruded aluminum

Size Options:

- Available in 2', 3, 4', 6' and 8' lengths (nominal)

Listing & Ratings:

- All electrical components are U.L. listed or recognized
- All fixtures are U.L. Certified and Union made in the USA
- Meets Buy America Act (BAA), BABA Compliant

Mounting Options:

- Surface or cable mount (specify "AC" when ordering)

Driver:

- Universal voltage 120-277V standard
- Custom driver tuning available for specific lumen requirements
- 0-10V or Lutron dimming

Warranty:

- 5 years - part replacement only (see our terms & conditions page at www.lamarled.com for details)

See page 2 for lumen chart & dimensions

Ordering Guide / Example		NLSR48MRA-40D				
NLSR			RA			
Series	Size	Power	Lens Options	CCT	General Options	Run Configuration
NLSR = Narrow linear round surface/suspended	24 = 2' nominal 36 = 3' nominal 48 = 4' nominal 72 = 6' nominal 96 = 8' nominal	L = Low M = Medium H = High	RA = Round acrylic	30 = 3000K 35 = 3500K 40 = 4000K 50 = 5000K	EM = Emergency pack >90 min., >500 lumens (higher output & run time available - consult factory) EMB = BABA Compliant Emergency pack >90 min., >500 lumens BLK = Black metal construction D = 0-10V dimming to 1% (standard) DTD = 0-10V Dim to Dark LDH = Lutron EcoSystem Hi-lume digital 1% w/Fade to Black MX1 or MX2 = 2-wire 120V or 277V 5% phase cut dimming AC = 4ft aircraft cable mount	Blank = Individual BOR = Beginning of run (6' & 8' only) EOR = End of run (2'-8') INT = Intermediate (6' & 8' only)

Consult factory for additional options not shown or listed
4ft AC cable kits and pre-wired power drop included with -AC option,
other lengths available - consult factory
Feed through wiring is included for continuous run models (BOR, INT and EOR)

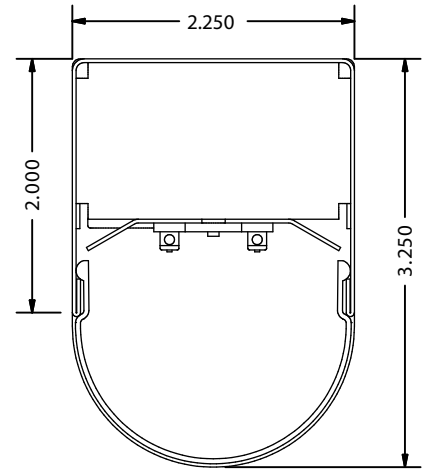
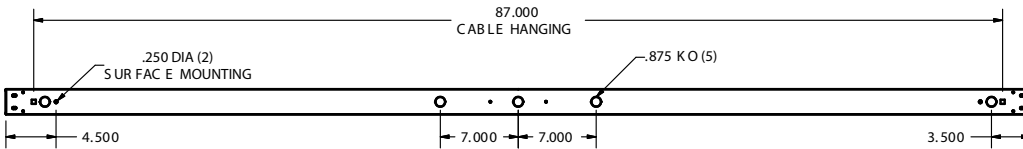
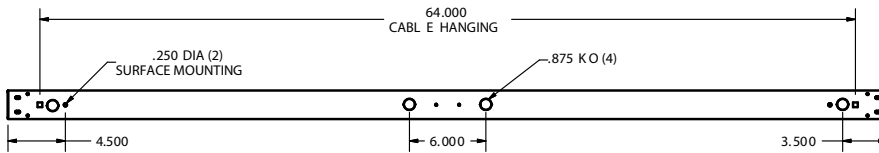
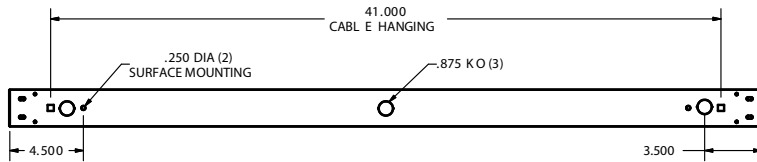
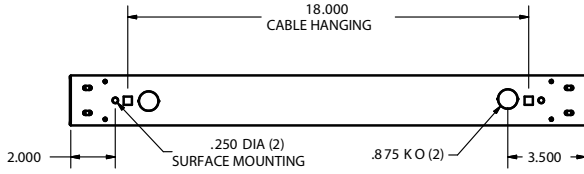
Correlated Color Temperatures (CCTs) fall within the nominal range as per ANSI C78.377A

Project Information:	
Job Name:	Fixture Type:
Catalog #:	Date:
Comments:	

Certification & Listings:	

BEFORE INSTALLATION, PLEASE CONSULT YOUR LOCAL ORDINANCES AND BUILDING CODES FOR COMPLIANCE

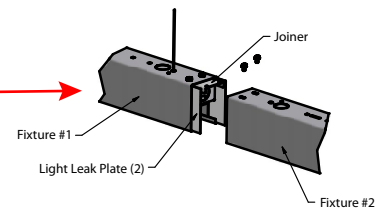
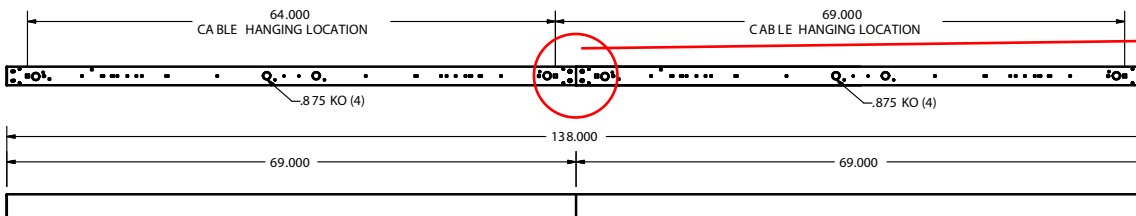
Dimensions



Length Chart

Size	
2'	23.125"
4'	46"
6'	69"
8'	92"

Typical Run Configuration (12' example shown)



LED Lumen/Wattage Chart - 4000K

NLSR 4'

Low	Medium	High
24W	33W	51W
2843 Lu	3717 Lu	5343 Lu

Lumen Multipliers

3000K	.95
3500K	.97
5000K	1.03